

Specifications

Models	S-80 X	
Measurements	US	Metric
Working height maximum*	86 ft	26.38 m
Platform height maximum	80 ft	24.38 m
Horizontal reach maximum	71 ft 6 in	21.79 m
Below ground reach	6 ft 1 in	1.85 m
A Platform length - 8 ft model	3 ft	0.91 m
Platform length - 6 ft model	2 ft 6 in	0.76 m
B Platform width - 8 ft model	8 ft	2.44 m
Platform width - 6 ft model	6 ft	1.83 m
C Height - stowed	9 ft 2 in	2.80 m
D Length - stowed	36 ft 6 in	11.10 m
Length - transport (jib tucked under)	_____	_____
E Width	8 ft 2 in	2.50 m
F Wheelbase	9 ft 4 in	2.80 m
G Ground clearance - center	15.8 in	0.40 m

Productivity

Lift capacity	500 lb/ 1000 lb	227 kg/ 454 kg
Platform rotation	160°	
Vertical jib rotation	_____	
Turntable rotation	360° continuous	
Turntable tailswing	4 ft 8 in	1.42 m
Drive speed - stowed - 2WD/4WD	3.3 mph	5.4 km/h
- raised/extended	0.65 mph	1.0 km/h
Gradeability - 2WD - stowed**	30%	
- 4WD - stowed**	45%	
Turning radius: inside	12 ft	3.66 m
outside	21 ft 6 in	6.55 m
Controls	12V DC proportional	
Tires - RT lug	Foam filled 18-625, 16 ply	

Power

Power source	74 hp (55 kW) Deutz turbo diesel T4i TD2011L04i
	63 hp (47 kW) Perkins diesel T4i 804D-33

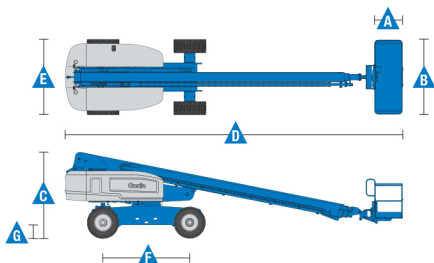
Auxiliary power unit	12V DC	
Hydraulic tank capacity	40 gal	150 L
Fuel tank capacity - diesel	35 gal	132 L

Weight***

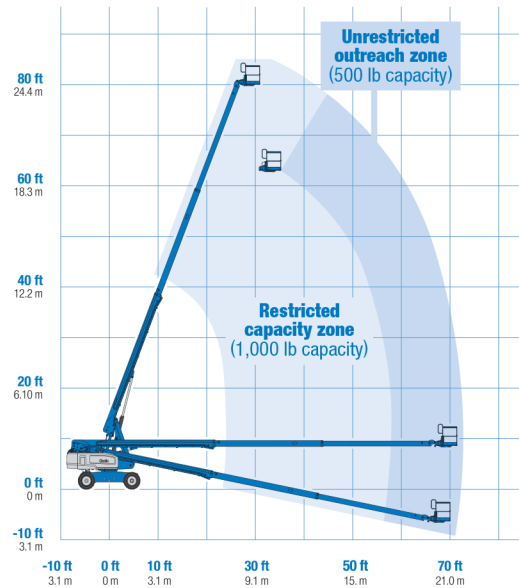
4WD	35,500 lbs	16,103 kg
-----	------------	-----------

Standards Compliance

ANSI A92.5, CSA B354.4, EN 280, AS 1418.10



Range Of Motion S-80 X



* The metric equivalent of working height adds 2 m to platform height. U.S. adds 6 ft to platform height.

** Gradeability applies to driving on slopes. See operator's manual for details regarding slope ratings.

*** Weight will vary depending on options and/or country standards.