

600 SERIES

ARTICULATING BOOM LIFTS



Performance

| | | |
|--|---------------------------------------|--------------------------|
| Platform Height 600A | 60 ft 5 in. | 18.42 m |
| Horizontal Outreach 600A | 39 ft 7 in. | 12.07 m |
| Up and Over Clearance Swing | 26 ft 7 in. 360 Degrees Continuous | 8.1 m |
| Platform Capacity Restricted (600A) | 1,000 lb | 450 kg |
| Platform Capacity Unrestricted | 500 lb | 227 kg |
| Platform Rotator | 180 Degrees Hydraulic | |
| Weight 600A | 22,150 lb | 10,047 kg |
| Max. Ground Bearing Pressure 600A | 77 psi | 5.5 kg/cm ² |
| Drive Speed 2WD | 4.25 mph | 6.8 kph |
| Gradeability 2WD | 30% | |
| Axle Oscillation Turning Radius Inside/Outside 2WS | 8 in. 11 ft. 5 in./17 ft. 8 in. | 20.4 cm 3.48 m/5.38 m |

Standard Specifications

Power Source

| | | |
|---|---------|---------|
| Dual Fuel Engine GM Vortec 3000 MPFI | 82 hp | 61 kw |
| Diesel Engine Deutz TD2.9L4 Tier 4 Final | 48.8 hp | 36.4 kw |
| Fuel Tank Capacity | 30 gal. | 113.6 L |

Hydraulic System

| | | |
|-------------------|----------|---------|
| • Capacity | 306 gal. | 115.8 L |
| • Auxiliary Power | 12V DC | |

Tires

| | |
|------------|----------------------------|
| • Standard | IN355/55D-6.25 Low Profile |
| • Optional | Foam-Filled |



Standard Features

- Oscillating Axle
- 180 Degree Hydraulic Platform Rotator
- 110V-AC Receptacle in the Platform
- 5 Degree Tilt Alarm/Indicator Light
- Swing-Out Engine Tray
- 12V-DC Auxiliary Power
- Hourmeter
- Horn
- Control ADE® System
- Proportional Controls
- Gull-Wing Engine Hood
- Platform Console Machine Status Light Panel*
- Lifting/Tie Down Lugs
- All Motion Alarm
- Glow Plugs (Diesel Engines)

* Provides indicator lights at platform control console for system distress, 5 degree tilt light, and foot switch status.

600 SERIES

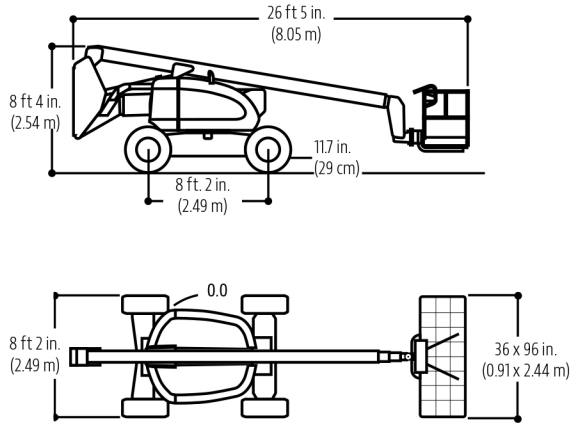
ARTICULATING BOOM LIFTS



Dimensions

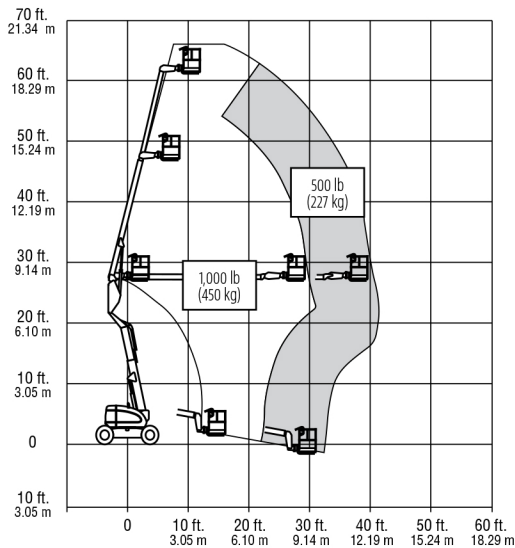
All dimensions are approximate.

600A



Reach Diagram

600A



The JLG "1 & 5" Warranty

JLG Industries, Inc. backs its products with its exclusive "1 & 5" Warranty. We provide coverage on all products for one (1) full year, and cover all specified major structural components for five (5) years. Due to continuous product improvements, we reserve the right to make specification and/or equipment changes without prior notification. This machine meets or exceeds applicable OSHA Regulations in 29 CFR 1910.67, 29 CFR 1926.453, ANSI A92.5-2006, and CSA Standard CAN3-B354.2-M82, as originally manufactured for intended applications.

Part No.: 3131120
R051410
Printed in USA



JLG Industries, Inc.
1 JLG Drive
McConnellsburg, PA 17233-9533
Telephone 717-485-5161
Toll-free in US 877-JLG-LIFT
Fax 717-485-6417
www.jlg.com

An Oshkosh Corporation Company