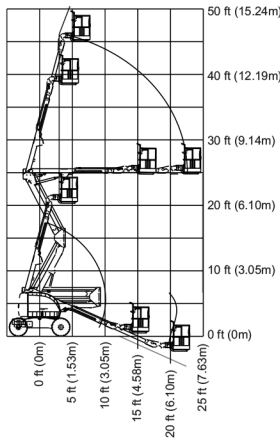


# JLG MODEL 450 SERIES II

# PERFORMANCE FEATURES

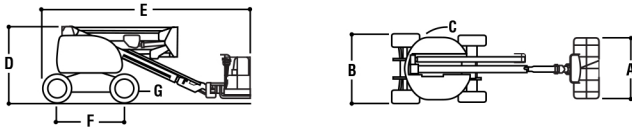
450A



## REACH SPECIFICATIONS

Platform Height .....	45 ft. (13.72 m)
Horizontal Outreach .....	24 ft. 6 in. (7.47 m)
Up and Over Height.....	25 ft. 2 in. (7.67 m)
Swing .....	360 Degrees Non-Continuous
Platform Capacity—Unrestricted .....	500 lbs. (227 kg)
Platform Rotator .....	180 Degrees Hydraulic
Jib - 450AJ Only - (Range of Articulation) .....	4 ft. 1 in. (1.24 m)
	145 Degrees (+78, -67)

450A



## DIMENSIONAL DATA

A. Platform Size .....	30 x 72 in. (0.76 x 1.83 m)
B. Overall Width 2WD .....	6 ft. 6 in. (1.98 m)
Overall Width 4WD .....	6 ft. 10 in. (2.08 m)
C. Tailswing (working condition).....	Zero
D. Stowed Height.....	7 ft. 5 in. (2.26 m)
E. Stowed Length .....	21 ft. 5 in. (6.53 m)
F. Wheelbase .....	6 ft. 6 in. (1.98 m)
G. Ground Clearance .....	14 in. (36 cm)
Gross Vehicle Weight (450A) .....	14,500 lbs. (6,577 kg)
Gross Vehicle Weight (450AJ).....	16,500 lbs. (7,484 kg)
Max. Ground Bearing Pressure 2WD .....	.58 psi (4.06 kg/cm <sup>2</sup> )
Max. Ground Bearing Pressure 4WD .....	.35 psi (2.5 kg/cm <sup>2</sup> )

## CHASSIS

Drive Speed 2WD .....	3.5 mph (5.6 kph)
Drive Speed 4WD .....	4.5 mph (7.2 kph)
Gradeability 2WD .....	30%
Gradeability 4WD .....	45%
Tires 2WD.....	12 x 16.5 Lug Tread
Tires 4WD .....	33/1550 x 16.5 Superwide
Axle Oscillation .....	8 in. (20.3 cm)
Turning Radius, (Inside/Outside) .....	5 ft. 8 in./14 ft. (1.73 m/4.27 m)

## POWER SOURCE

Dual Fuel Engine, Ford LRG-425 .....	82 hp (61 kW)
Diesel Engine, Deutz F3M1011 .....	47 hp (35 kW)
Diesel Engine, Caterpillar 3024C.....	50 hp (37.2 kW)
Fuel Tank Capacity.....	16.5 gal. (62.5 L)
Hydraulic Reservoir .....	30 gal. (113.6 L)
Auxiliary Power.....	12V DC

## Standard Features

- 2 Year Extended Limited Warranty
- 4 ft. (1.22 m) Articulating Jib (450AJ only)
- Platform 30 x 72 in. (0.76 x 1.83 m) Side Entry
- Inward Self-Closing Swinging Gate
- 180 Degree Hydraulic Platform Rotator
- Platform Console Machine Status Light Panel\*
- 110V-AC Receptacle in the Platform
- 5 Degree Tilt Alarm/Indicator Light
- Rim Protector Lug Tread Tires
- Swing Out Engine Module
- Gull-wing Turntable Hoods
- 12V-DC Auxiliary Power
- Hourmeter
- Hydrostatic Drive
- Proportional Controls
- Control ADE™ System
- Lifting/Tie Down Lugs
- Horn
- Oscillating Axle
- Aluminum Cast Control Box
- Operator Tool Tray
- Motion Alarm

\*Provides indicator lights at platform control console for system distress, low fuel, 5 degree tilt light, and foot switch status.

## The JLG "2 & 5" Warranty for Models 450A & 450AJ

JLG Industries, Inc. backs our 450 Series II boom lifts with our exclusive "2 & 5" Warranty. We provide coverage for two (2) full years, and cover all specified major structural components for five (5) years. These machines meet or exceed applicable OSHA Regulations in 29 CFR 1910.67, 29 CFR 1926.453, ANSI A92.5-1992 and CSA standard CAN3-B354.4-M82 as originally manufactured for intended applications. We reserve the right to make price, specification, and/or equipment changes without prior notification. All prices are in U.S. dollars, ex-works McConnellsburg, PA.

## JLG Industries, Inc.

1 JLG Drive, McConnellsburg, PA 17233-9533  
 Telephone 717-485-5161 Toll-free in US 877-JLG-LIFT  
 Fax 717-485-6417  
[www.jlg.com](http://www.jlg.com)

Printed in USA  
 FORM NO.: SS-450II-1001-10M  
 PART NO.: 3131117  
 R020502

