

## E300AJ

### ARTICULATING BOOM LIFTS

## Platform

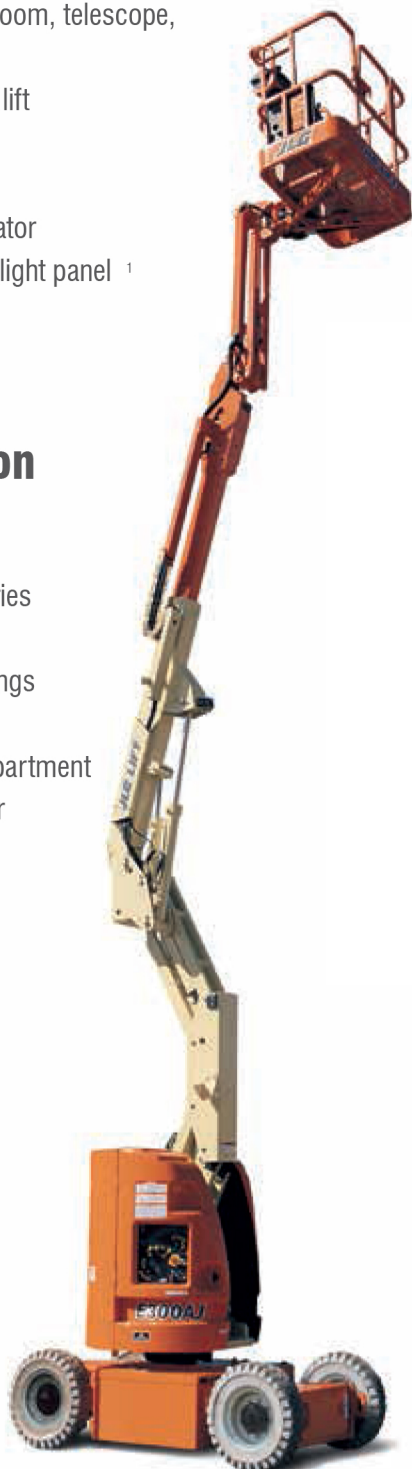
- 0.76 m x 1.22 m low mount platform
- Side entry with drop bar mid rail
- Multiple function operation
- Full proportional drive joystick control with integral thumb steer switch
- Full proportional main boom and swing joystick control
- Multiple speed control for lower boom, telescope, jib and platform rotate
- Selectable creep speed on drive / lift and swing functions
- 1.22 m articulating jib
- 180 degree powered platform rotator
- Platform console machine status light panel <sup>1</sup>
- Load sensing system
- AC power cable to platform

## Functional Equipment & Accessories

- 3 degree tilt alarm and indicator light
- Non mark solid rubber tyres
- Pothole protection system
- 1.22m narrow frame
- Lifting/tie down lugs
- Ground control selector switch with key lock
- Battery condition indicator
- Hour meter
- Horn
- Manual descent system

## Power & Transmission

- Two Wheel Direct Electric Drive
- 8 x 6V 305 A/hr deep cycle batteries
- Automatic traction control
- Programmable "Personality" settings
- On-board self-diagnostic testing
- Enclosed battery / electrical compartment
- 20 amp automatic battery charger
- Automatic rear wheel brakes
- Sculptured ABS hoods



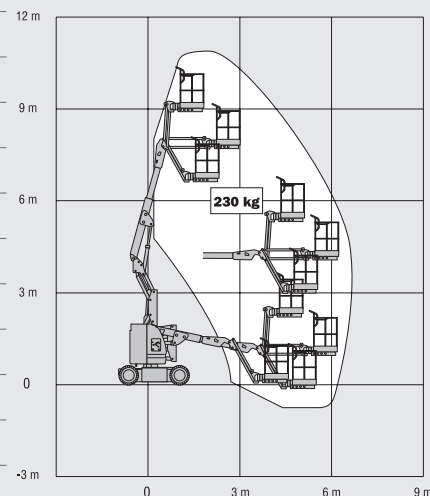
<sup>1</sup> Provides indicator lights at platform control console for system distress, low battery, tilt light, and foot switch status.

<sup>2</sup> Includes all-motion alarm and amber strobe light.

# E300AJ

## ARTICULATING BOOM LIFTS

Platform Height	9.19 m
Horizontal Outreach	6.17 m
Up and Over Height	4.01 m
Swing (non-continuous)	350°
Platform Capacity – Unrestricted	230 kg
Platform Rotator (Hydraulic)	180°
Jib – Overall Length	1.22 m
Jib - Range of articulation	144° Vertical (+84°/-60°)
A. Platform Size	0.76 m x 1.22 m
B. Overall Width	1.22 m
C. Tailswing (working condition)	Zero
D. Stowed Height	2.01 m
E. Stowed Length	5.54 m
F. Wheelbase	1.65 m
G. Ground Clearance	0.10 m
Machine weight <sup>1</sup>	6,900 kg
Maximum Ground Bearing Pressure	11.95 kg/cm <sup>2</sup>
Drive Speed	4.8 km/h
Gradeability	25%
Tyres	25 x 7-12 Non marking
Turning Radius – Inside	1.52 m
Turning Radius – Outside	3.10 m
Electrical System	48V DC
Batteries	8 x 6V 305 A/hr
Drive Motors	Dual Electric Traction
Brakes	Automatic Spring Applied
Hydraulic Motor	Perm. Magnet
Hydraulic Pump	Gear Pump
Hydraulic System	23 L



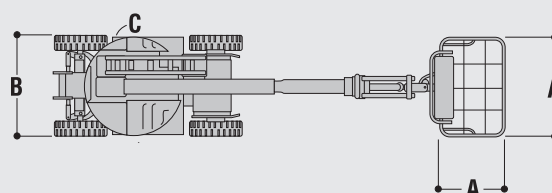
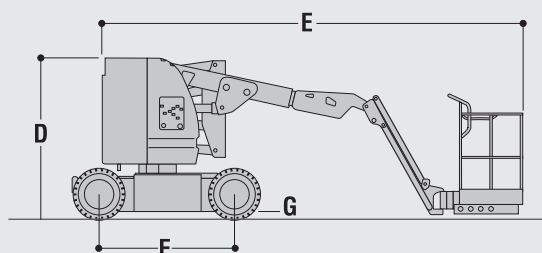
JLG Industries, Inc. is a leading designer and manufacturer of access equipment and complementary services and attachments.

JLG has manufacturing facilities in the United States, France, Romania, China and Belgium. Customers throughout Europe, Scandinavia, Africa and the Middle East benefit from a network of dedicated sales and service operations designed to deliver the highest levels of support.

JLG is an Oshkosh Corporation company.

[www.jlgeurope.com](http://www.jlgeurope.com)

<sup>1</sup> Certain options or country standards may increase weight and/or dimensions.



JLG is continually researching and developing products and reserves the right to make modifications without prior notice. All data in this document is indicative. Certain options or country standards will increase weight. Specifications may change to meet country standards or with the addition of optional equipment.